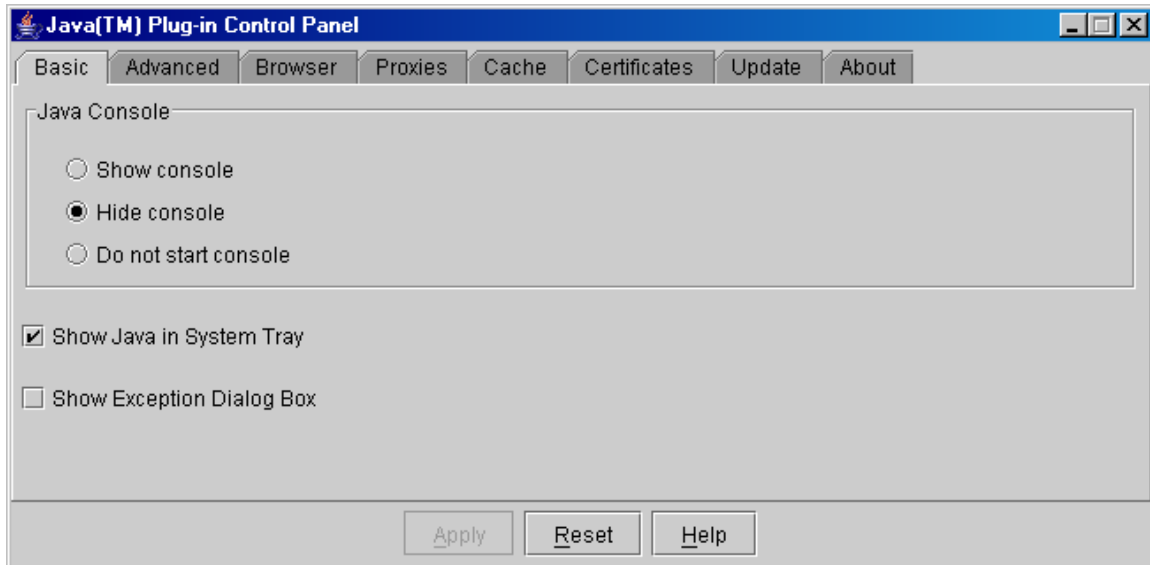


## Working with Java:

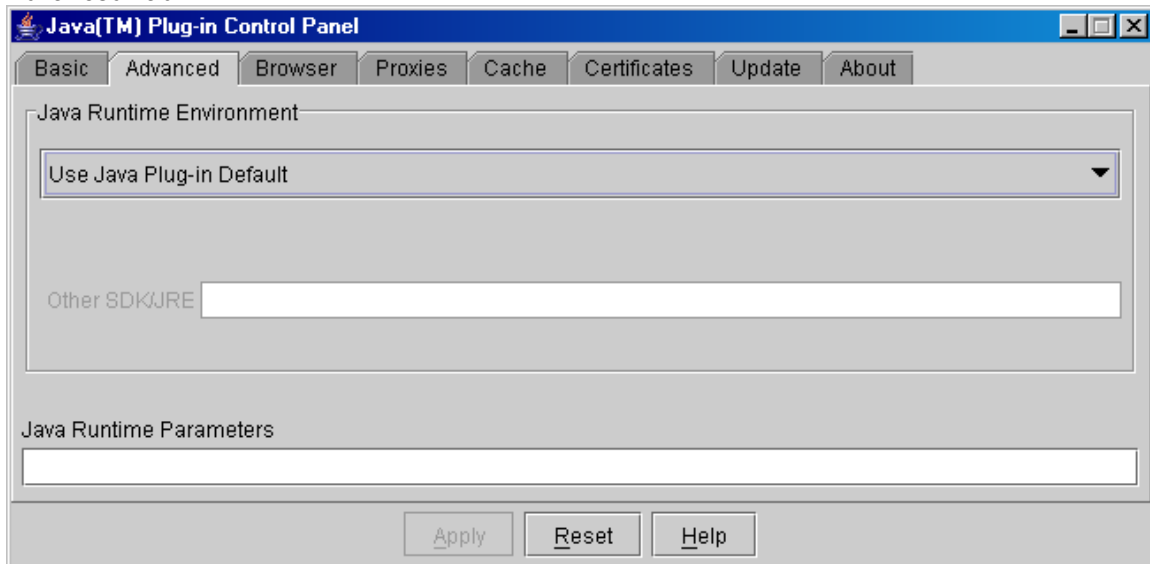
Start → Control Panel → Java Plug-In

Version: 1.4.2\_03

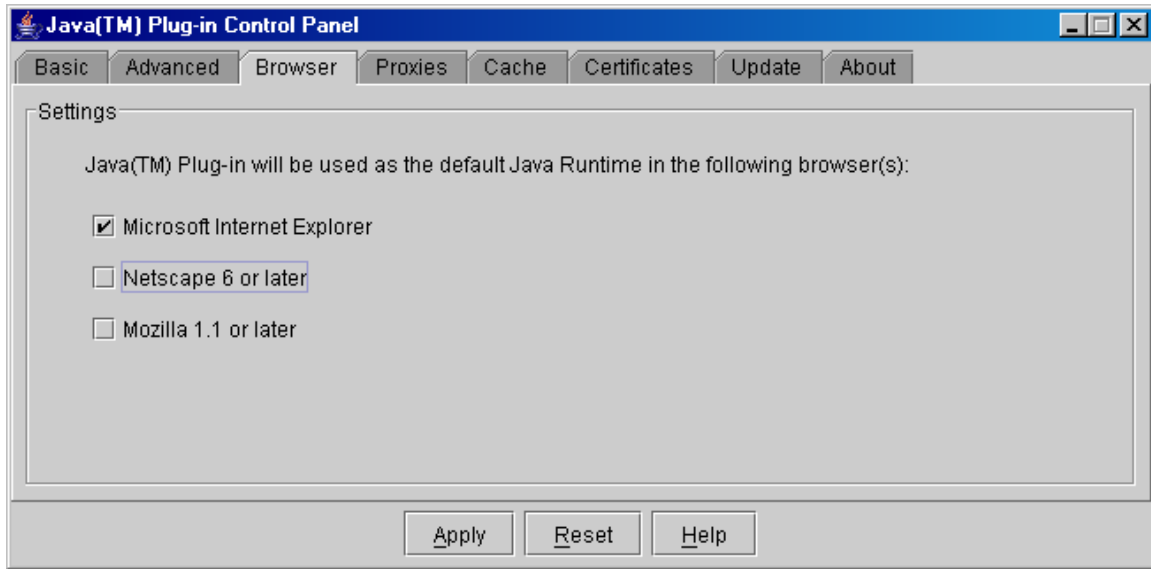
Basic Tab:



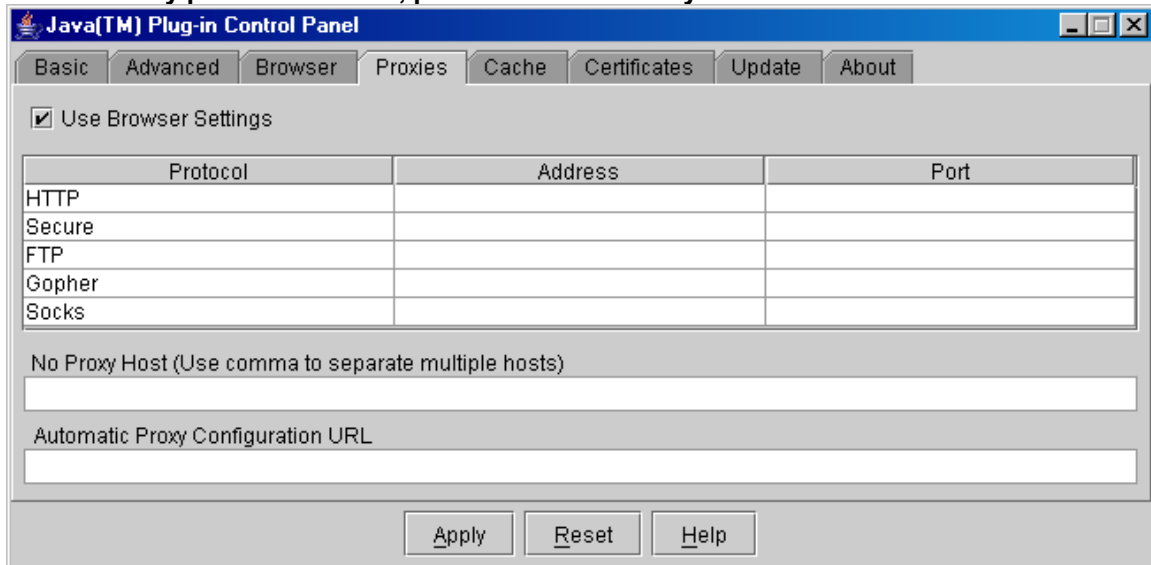
Advanced Tab:



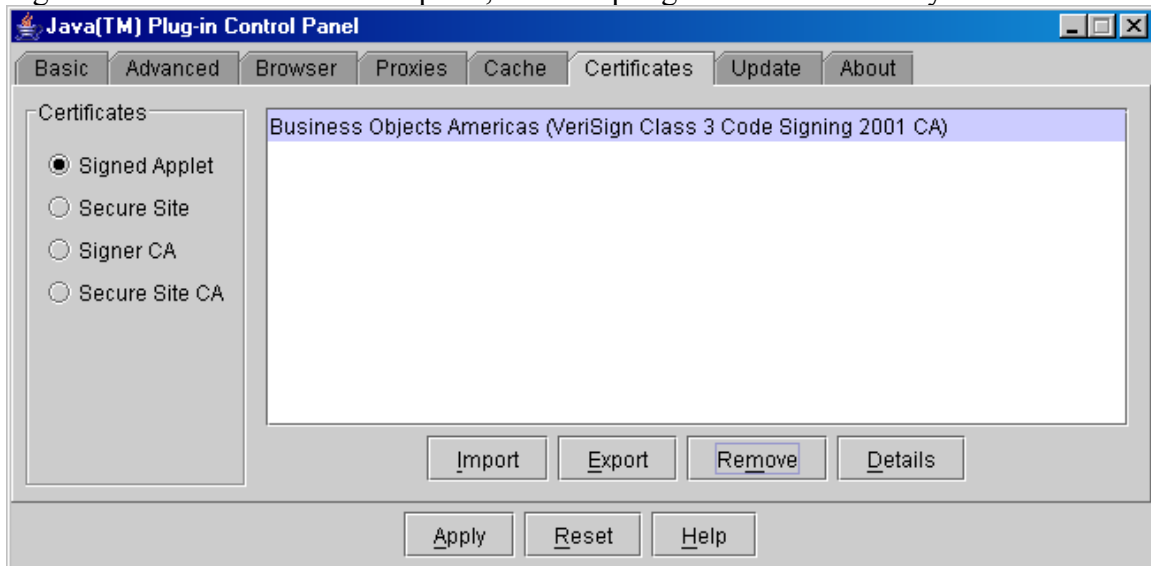
Browser:



Proxies: If any proxies are used, please make sure they are entered here.

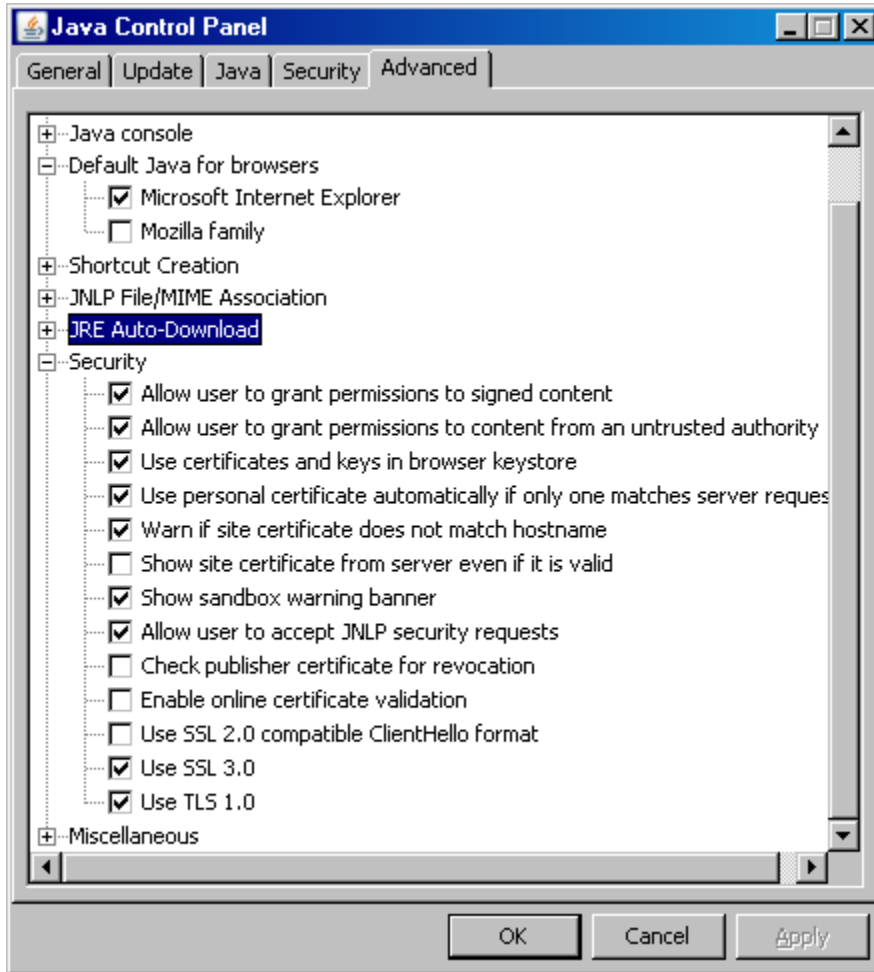


Certificates: These can be more than one. Some times it might give a warning that Signature can't be verified or expired, and accepting it will not cause any issues.

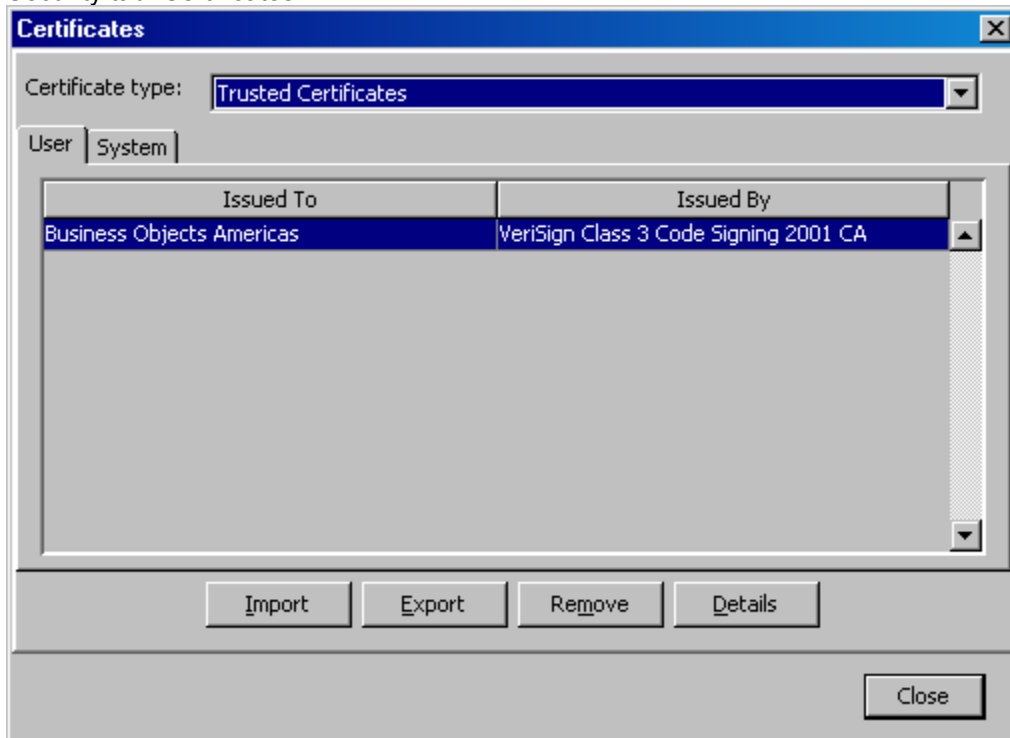


Version: 1.6.0

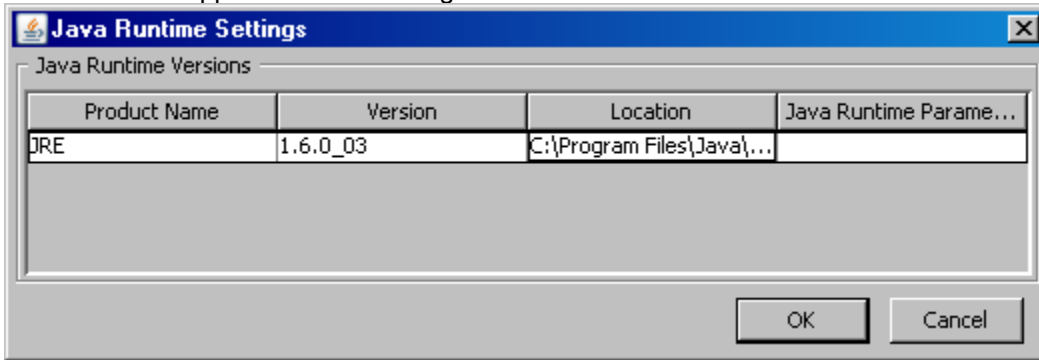
Advanced tab:



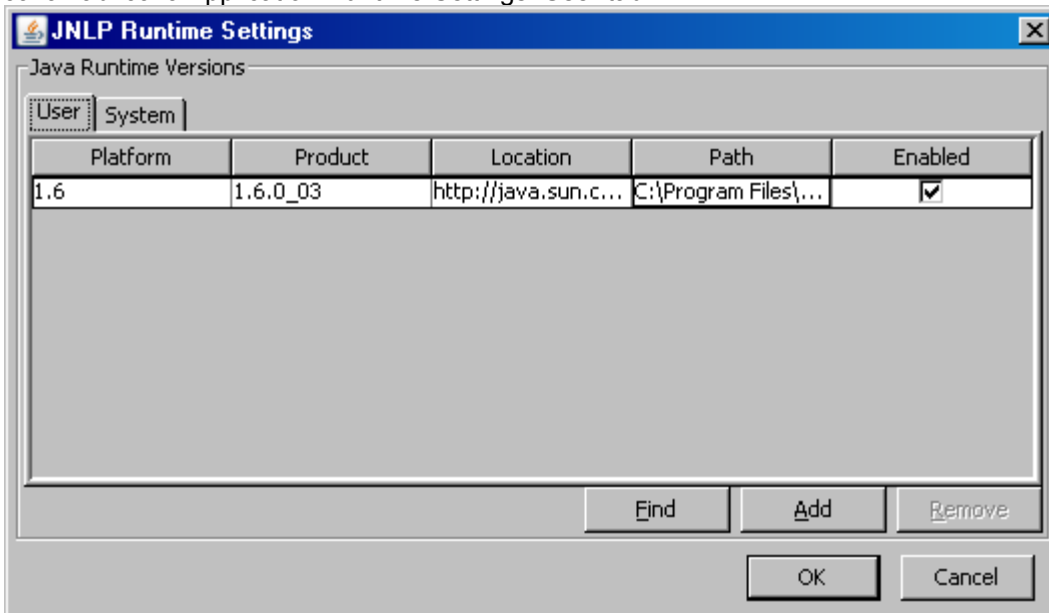
Security tab: Certificates:



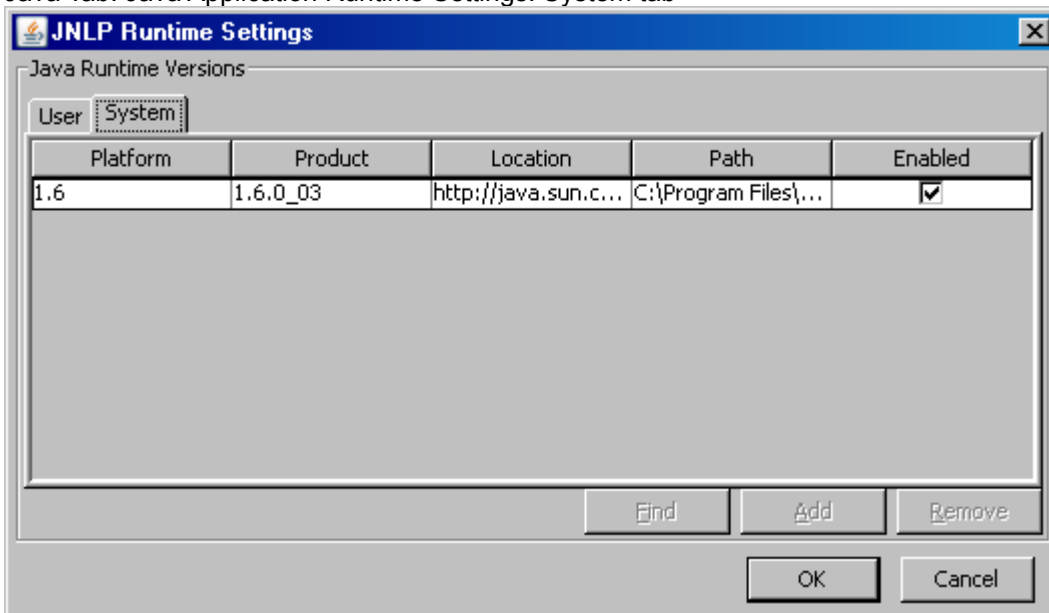
Java tab: Java Applet Runtime Settings



Java Tab: Java Application Runtime Settings: User tab

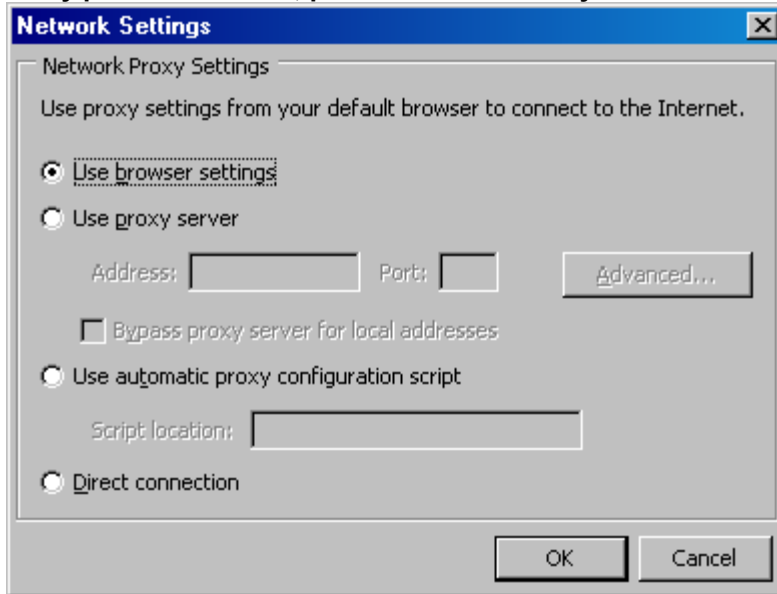


Java Tab: Java Application Runtime Settings: System tab



General Tab: Network Settings:

**If any proxies are used, please make sure they are entered here.**



The image shows a dialog box titled "Network Settings" with a close button (X) in the top right corner. The main heading is "Network Proxy Settings". Below this, there is a line of text: "Use proxy settings from your default browser to connect to the Internet." There are four radio button options: "Use browser settings" (which is selected), "Use proxy server", "Use automatic proxy configuration script", and "Direct connection". Under "Use proxy server", there are two text input fields labeled "Address:" and "Port:", and a button labeled "Advanced...". Below these is a checkbox labeled "Bypass proxy server for local addresses". Under "Use automatic proxy configuration script", there is a text input field labeled "Script location:". At the bottom of the dialog box are two buttons: "OK" and "Cancel".